

Prima and Chameleon Sea Beauty Project Sheet By Monica Maldarella



Inspiration: This mermaid's stamp first reminded me of a beautiful skinny sea model with sparkles and glitters and glamour. Most of all, I envied a lot the hair, perfect, despite the salty humidity!

Materials Used: Chameleon Pens: Bisque (NU1), Sky Blue (BL3), Fawn (NU3), Summer Sun (YL2), Warm Sunset (YO3), Hot Cocoa (BR2), Bark (BR5), Crimson Red (RD4); Stamps: 910471 (Prima Marketing); Prima marketing paper and embellishments: Watercolor Tag Pad, Royal Menagerie A4 Paper Pad, Tabs & Tags, Alphabets Stickers, Prisma Flowers, Say it in crystals; Ink pad: Versafine Onyx Black, Distress Vintage Photo, Salty Ocean; embossing powder clear; Dies: 660021 Circle Scallop (Framelits Sizzix), round corner puch; blending tool; Clear Wink of Stella, fine tip scissors, Crystal Stickles, foam glue pads, liquid glue.

Instructions:

- 1) Print the stamp in two parts onto a watercolor tag using Versafine black ink pad; then, emboss it with clear powder.



Prima and Chameleon Sea Beauty Project Sheet By Monica Maldarella

- 2) Start coloring the upper half of the body. Using the brush nib, infuse the Bisque pen for 9-10 seconds and color each half of the mermaid's face starting by the eyes line. Color the cheeks without infusing. Color the chest and the arms infusing for 8-9 seconds for each area, as shown in the picture. Trace the clavicles and add shadows without infusing.



- 3) Using the brush nib, infuse the Summer Sun pen for 11-12 seconds and make a couple of strips along the tail. Then, draw the scales with a pencil.

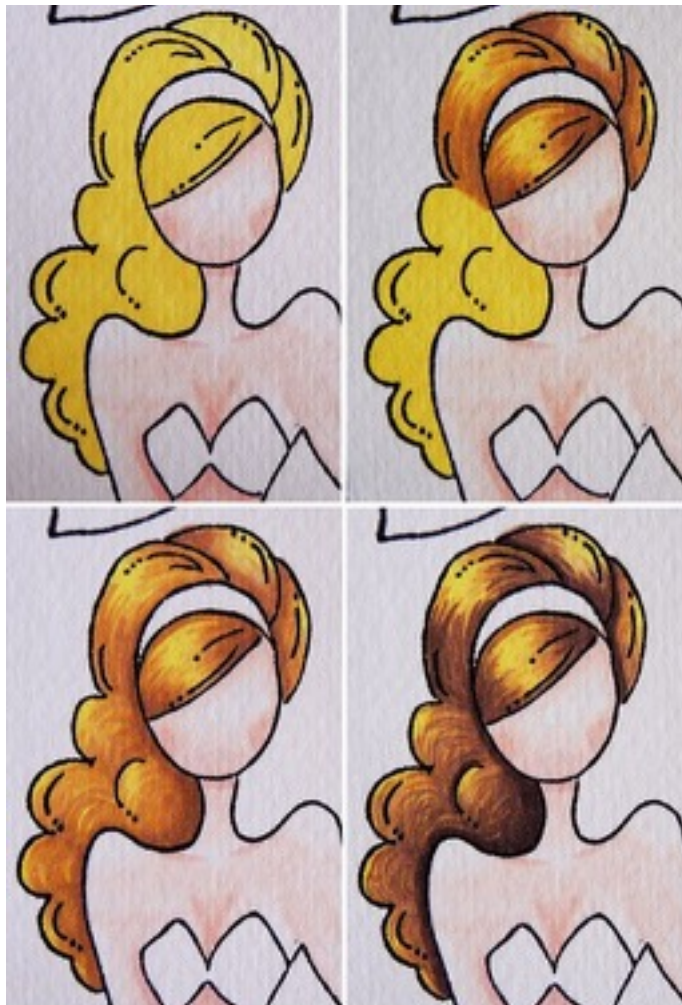


Prima and Chameleon Sea Beauty Project Sheet By Monica Maldarella

- 4) Starting from the waist, color each scale infusing the brush nib of the Sky Blue pen for 8 seconds. Decrease time to 6 and 4 seconds for the smaller scales.



- 5) Let's return to the mermaid's face, and color the hair with Warm Sunset pen without infusing. Then color each area using the Hot Cocoa pen, infusing the bullet nib for 5-6 seconds each. Repeat with the Bark pen.



Prima and Chameleon Sea Beauty Project Sheet By Monica Maldarella

- 6) Draw nose, lips and a close eye with eyelashes. Color the eyelid infusing the bullet nib of the Blue Sky pen for 3 seconds, then color the lips with Red Crimson pen infusing for 3 seconds.



- 7) Cut out the colored parts and compose the mermaid by gluing the tail over the waist.



Prima and Chameleon Sea Beauty Project Sheet By Monica Maldarella

- 8) Detach the central beads from 7 blue flowers and save them for later. Cut the flowers to obtain one–two–three petals and glue them onto each caudal fin (as scales) as shown in the picture.



- 9) Glue a two–petals piece onto the bikini top and color the hair band infusing the bullet nib of the Blue Sky pen for 4 seconds. Enrich the tail, the eyelid and the hair band with the Wink of Stella. Then add Crystal Sticles to all the edges of the petals/scales, and a crystal lace onto the waist and a couple of strass onto the bikini top.



- 10) Cut out a piece of a sea paper from the A4 pad, then color some of the scales with Blue Sky pen infusing the brush nib for 8 seconds. And the shell with Fawn pen, infusing the brush nib for 12 seconds.
- 11) Round all the angles and blend the edges using the Salty Ocean pad.

Prima and Chameleon Sea Beauty Project Sheet By Monica Maldarella



Prima and Chameleon Sea Beauty Project Sheet By Monica Maldarella

- 12) Cut out a 5 ¼" x 5 ¼" half circle from another sheet (the one with roses) of the paper pad using the Sizzix die. Blend the edges with Vintage Photo pad.



- 13) Pick up the embossed butterflies tag and blend the Vintage Photo onto the surface. Add some stickers and twine as shown in the picture.



- 14) Compose the card attaching all the elements to a rose paper sheet binded in half. Glue onto the scalloped half circle the yellow beads detached from the blue flowers.

Prima and Chameleon Sea Beauty Project Sheet By Monica Maldarella

