



Materials Used:- Chameleon Pens Peony Pink (PK4), Dark Sage (GR2), Mossy Meadow (YG3), Warm Grey 3 (WG3), Burnt Umber (BR4), Crafter's workshop 6"x6" stencil Poppy Fields, Neenah White 80lb card stock, Neenah White 110lb card stock (for card base) , Birthday Blooms stamp set by Stampin' Up!, Smokey Shadow card stock, Hero Arts Intense Black ink pad, Hero Arts Soft Granite Shadow ink, Versamark ink pad, White embossing powder, heat tool, Clear Pico Embellisher, Sequins and beads, Clarity Stencil brush

Instructions:

1. Cut panel of Smoky Shadow card stock and secure the stencil on top of it. Then using Clarity stencil brush (I used the largest one I had) apply Soft Granite Hero Arts Shadow ink.



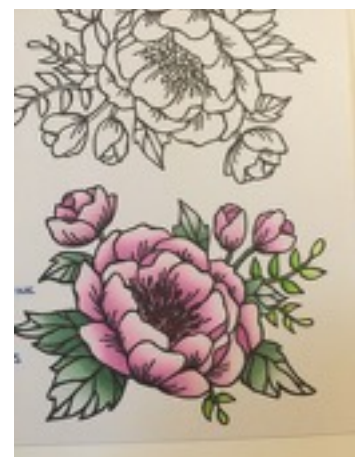
2. Stamp your flower image using Hero Arts Intense Black ink (or Memento) and color it with your Chameleon Pens. For the petals use the Peony Pink (PK4) pen and infuse the brush nib using the toning medium for 7 seconds for the larger petals and 4-5 seconds for the smaller. Then color the center using the Burnt Umber (BR4) pen (bullet nib) without infusing it.



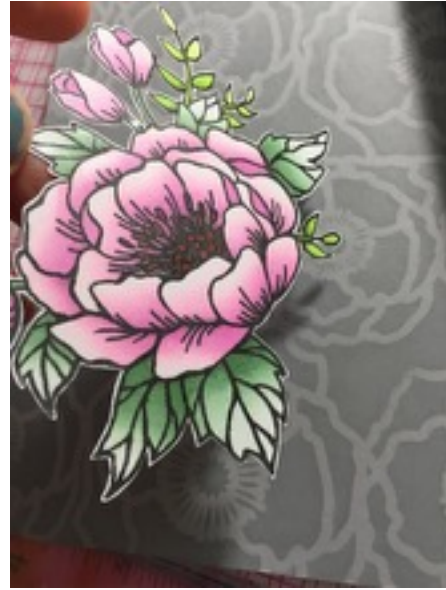
Next color the leaves using the Dark Sage (GR2) and Mossy Meadow (YG3) pens. For the largest leaf infuse the brush nib of the Dark Sage pen and color 1/2 of the leaf, then repeat for the other half. For the medium infuse for 8 seconds for the whole leaf, and for the smaller leaves infuse the pen for 4-5 seconds. Next color the little branches using the Mossy Meadow by infusing the bullet nib for 5 seconds for each branch and start from the outer part going towards the flowers.



Add shadows to the flowers using the Warm Grey 3 (WG3) pen, infuse it for 1-2 seconds and color the base of the petals to add dimension.



3. Cut out your image and apply Clear Wink of Stella over it.



4. Stamps sentiment and embossing it with white embossing powder on your stencilled panel  
INSTERT IMAGE  
IMG\_8238.JPG



5. Finish the card by adhering the flower to your panel, adding some Clear Pico Embellisher to the flower center and some sequins. Then adhere the panel onto white card base.



You can find more inspiration on the Chameleon Pens blog <http://blog.chameleonpens.com> and on the website <http://www.chameleonpens.com> and on Iilina's blog at <http://ilnacrouse.com>



